



Crossing the Circle: Southern Expedition

February 28 - March 12, 2018

Latitude

55°

60°

65°

Ushuaia

A

S

B

Heading to The Circle

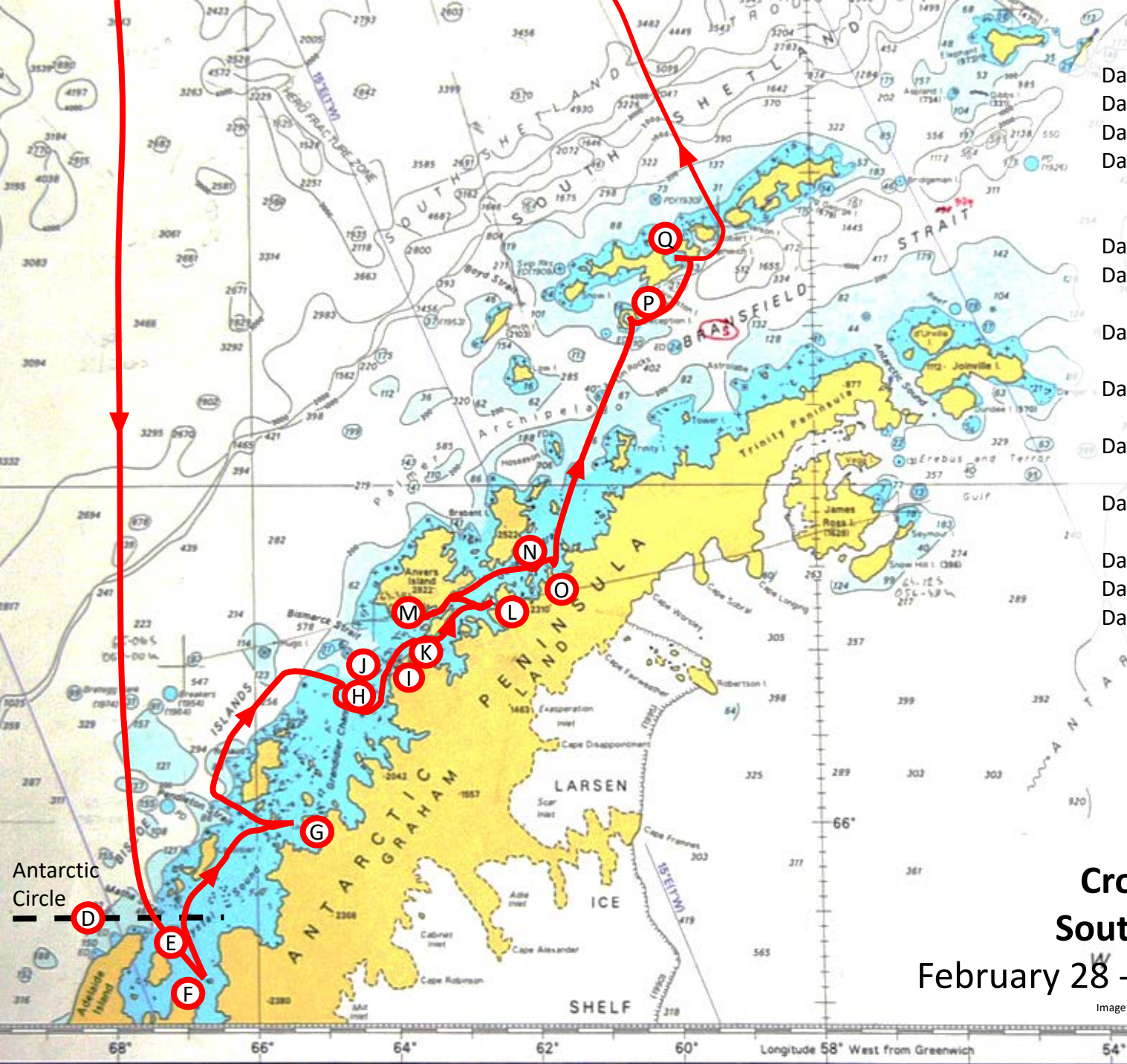
C

Antarctic Peninsula

Heading to Ushuaia

R

South Shetland Islands



- Day 1 - Ushuaia, Argentina (A)
- Day 2 - Drake Passage (B)
- Day 3 - Drake Passage (C)
- Day 4 - Antarctic Circle (D)
- Crystal Sound (E)
- Detaille Island (F)
- Day 5 - Fish Islands (G)
- Day 6 - Berthelot Islands (H)
- Petermann Island (I)
- Day 7 - Yalour Islands (J)
- Port Charcot (K)
- Day 8 - Danco Island (L)
- Port Lockroy (M)
- Day 9 - Enterprise Island (N)
- Portal Point (O)
- Day 10 - Whalers' Bay (P)
- Halfmoon Island (Q)
- Day 11 - Drake Passage (R)
- Day 12 - Cape Horn (S)
- Day 13 - Ushuaia, Argentina (A)



Crossing the Circle: Southern Expedition

February 28 - March 12, 2018

Image credit and rights reserved by: Defense Mapping Agency